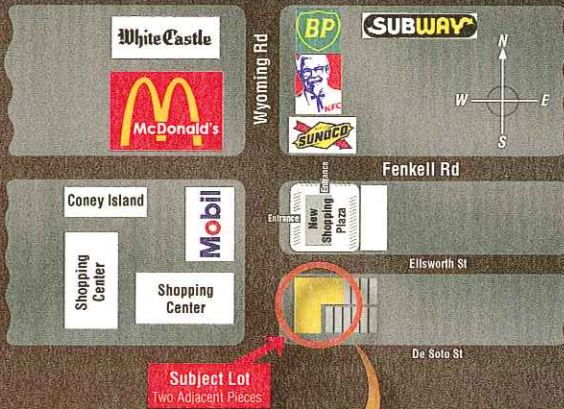


# INVESTMENT PROPERTY FOR SALE

or Build to Suit

## VACANT LOT

15100 - 15138 Wyoming  
 Detroit, Michigan 48238

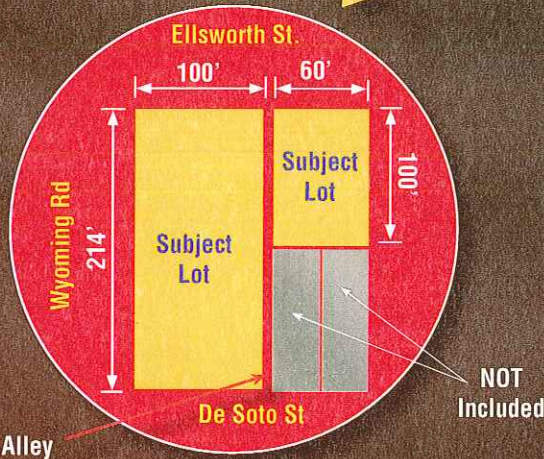


### LOCATION

South East Corner of Wyoming & Ellsworth, less than 1/4 Mile from the Lodge Freeway and is one of the busiest locations in the City of Detroit.

### DESCRIPTION

This site is ideal for fast food restaurant, auto parts store, dollar store or even a shopping center.



**SIZE**  
 27,000 Sq. Ft.

**ZONING**  
 C2 Commercial

**UTILITIES**  
 All Available

**PRICE**



2002 DEMOGRAPHICS	1 Mile	2 Mile	3 Mile
2002 Est. Avg. Household Income	\$39,801	\$54,347	\$54,054
2002 Est. Median Household Income	\$30,299	\$42,901	\$43,404

1999 TRAFFIC COUNT	COUNT (vpd)
Average for both intersections of Wyoming & Ellsworth	22,871

# Bacall

Development, [REDACTED]

**Bacall**  
 development

Eddie Bacall

248-867-1884

30407 West Thirteen Mile Road  
 Farmington Hills, Michigan 48334  
 Office: 248.538.7500, ext. 202  
 Fax: 248.538.7800  
 eddiebacall@bacallddevelopment.com