

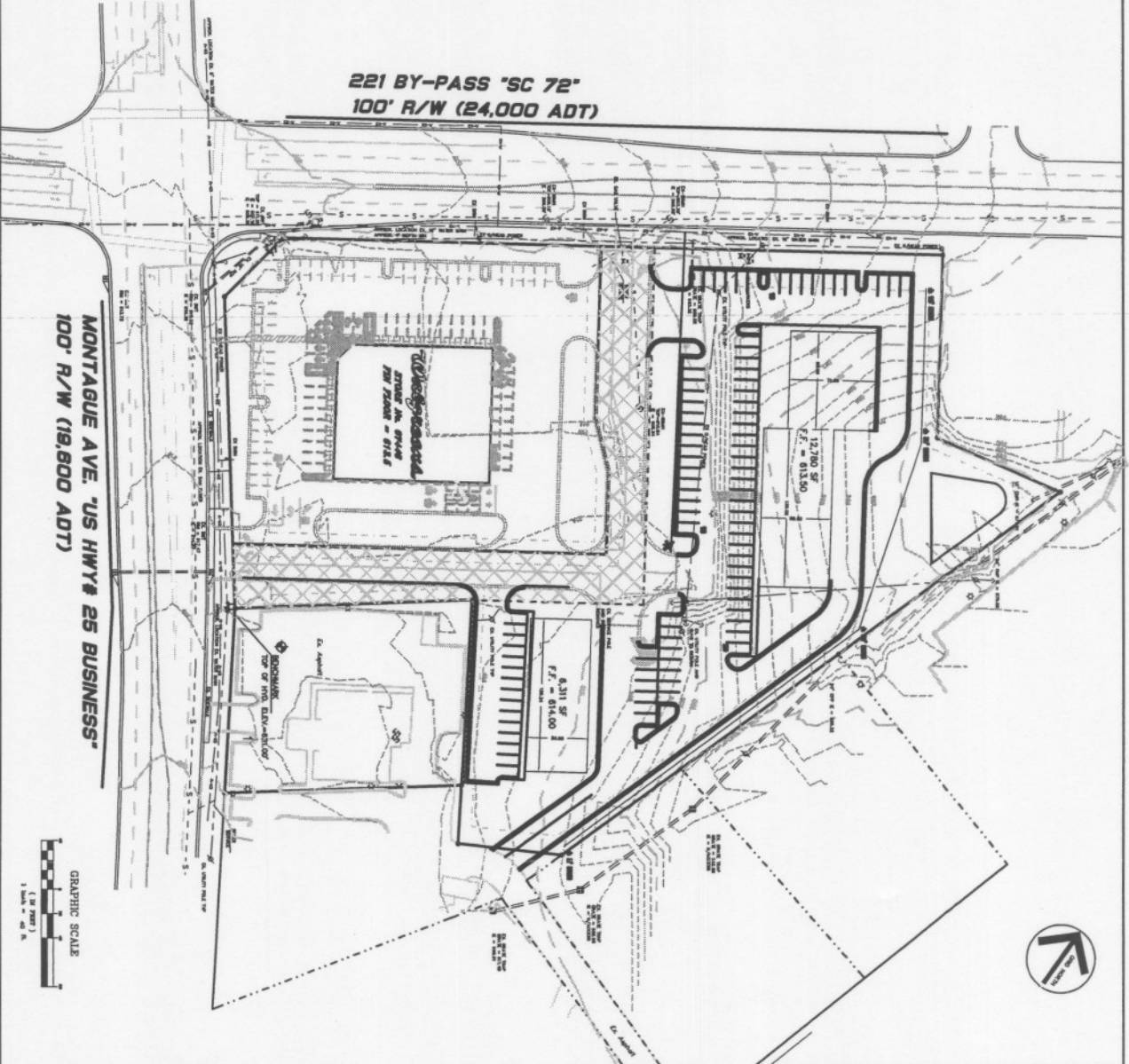
NO.	DATE	REVISION
1		
2		
3		
4		
5		



**BEFORE YOU DIG**  
 SC 106 CALL 888-388-3888  
 THE PURPOSE OF THIS NOTICE IS TO ADVISE THE PUBLIC THAT THE STATE OF MISSISSIPPI HAS A REGISTERED SYSTEM OF UNDERGROUND UTILITY LINES. BEFORE YOU DIG, YOU MUST CALL 888-388-3888 TO OBTAIN A DIGGING PERMIT AND TO LOCATE ALL EXISTING UTILITY LINES. FAILURE TO CALL 888-388-3888 BEFORE YOU DIG MAY RESULT IN DAMAGE TO UTILITY LINES, PERSONAL INJURY, OR DEATH. THE STATE OF MISSISSIPPI IS NOT RESPONSIBLE FOR ANY DAMAGE TO UTILITY LINES, PERSONAL INJURY, OR DEATH RESULTING FROM THE FAILURE TO CALL 888-388-3888 BEFORE YOU DIG.



LOCATION MAP  
 SCALE: 1" = 5000'



GRAPHIC SCALE  
 1" = 30'



**RETAIL SHOPS**  
 PROPOSED COMMERCIAL/RETAIL DEVELOPMENT  
 LOCATED IN MISSISSIPPI COUNTY, MISSISSIPPI

OWNER / DEVELOPER / CONTACT	
DEVELOPMENT, LLC	
1000 W. MAIN ST. SUITE 100	
MEMPHIS, TN 38103	
PHONE: (901) 527-1111	
FAX: (901) 527-1111	
PROJECT DATA	
TITLE	111
PROJECT NO.	111
OWNER	DEVELOPMENT, LLC
DESIGNER	SCOTT & BROWN, INC.
DATE	11/11/11
PROJECT NO.	111
PROJECT NAME	RETAIL SHOPS
PROJECT ADDRESS	11111111111111111111
PROJECT CITY	MEMPHIS, TN
PROJECT STATE	MISSISSIPPI
PROJECT ZIP	38103
PROJECT COUNTY	MISSISSIPPI COUNTY
PROJECT DISTRICT	MEMPHIS
PROJECT ZONING	SC 106
PROJECT PERMIT NO.	
PROJECT PLAN NO.	
PROJECT SHEET NO.	
PROJECT DATE	
PROJECT STATUS	
PROJECT COMMENTS	
PROJECT NOTES	

