

Excellent Development Opportunity

Great Visibility | Major Retail Corridor | High Traffic Counts

15100-15138 Wyoming Street, Detroit, Michigan 48238



Located at the SEC Wyoming and Ellsworth Streets the subject site is located less than 1/4 Mile from the Lodge Freeway at an extremely busy intersection. This is an extraordinary opportunity to land lease or acquire an excellent parcel of land located in Detroit, Michigan. The Property is zoned C2 and site plan approved to accommodate one, single-story 8,000 square foot retail building.

- Subject site is approximately 0.62 acres
- Site can accommodate one single-story retail building up to 8,000 square feet
- Traffic Counts: 16,923
- Population (3 Miles): 232,432
- Households (3 Miles): 84,665
- Mean Household Income (3 Miles): \$43,000
- All utilities are available at the site
- Ideal for fast food restaurant, auto parts store, dollar store or retail strip center!



For Additional Information please contact:

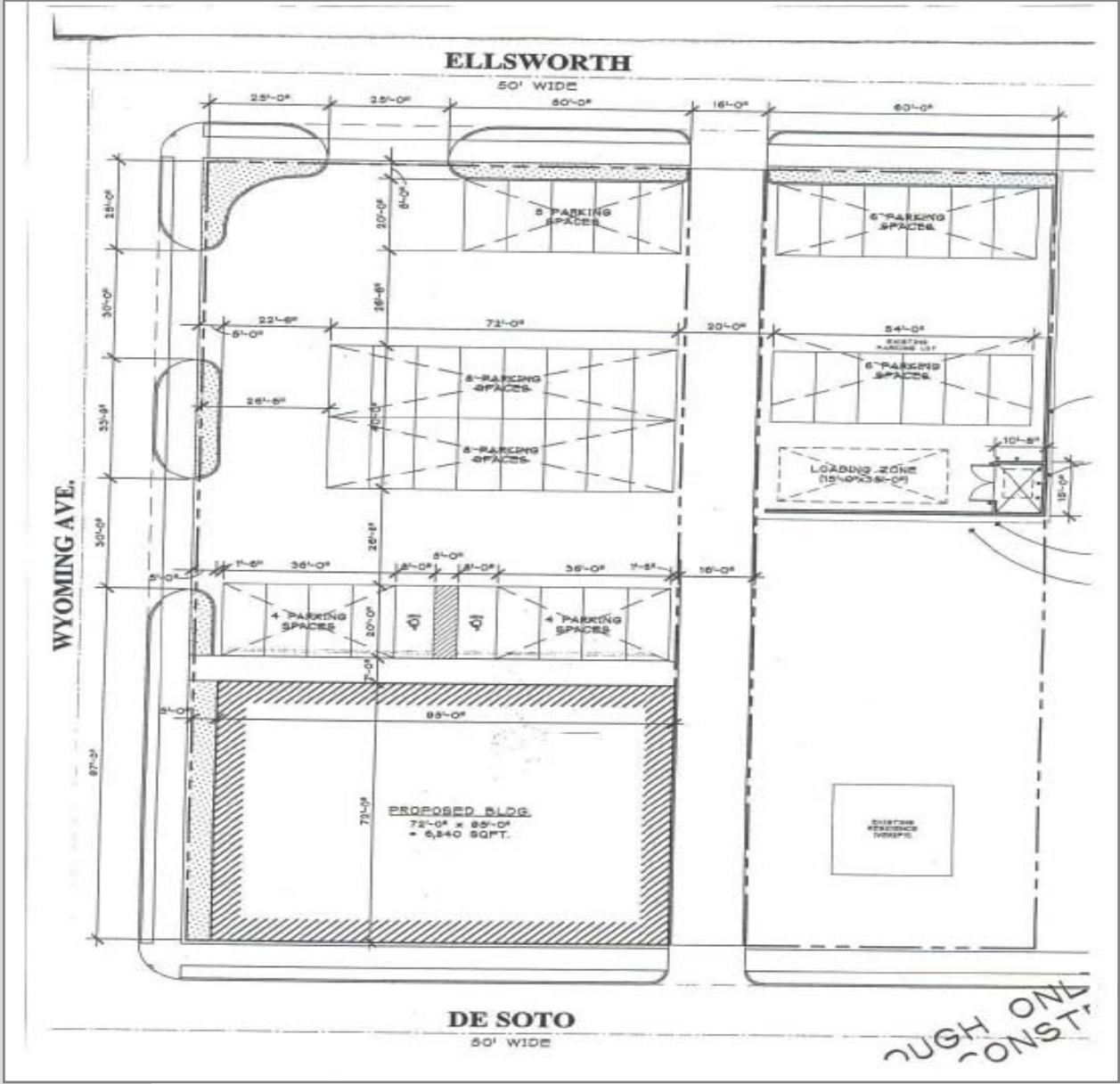
734.454.1855



Excellent Development Opportunity

Great Visibility | Major Retail Corridor | High Traffic Counts

15100-15138 Wyoming Street, Detroit, Michigan 48238



For Additional Information, contact:

734.454.1855



**PARAMOUNT
REAL
ESTATE
SERVICES**