

# National Tenant Mix-Join Rite Aid

Major Retail Corridor | High Traffic Counts



SEC 10 Mile and Greenfield Roads, Oak Park, Michigan 48237



Extraordinary opportunity to lease in a newly developed +/- 20,000 square foot in-line retail center. Join Rite Aid, Starbuck's, T-Mobile, FedEx Kinko's, Kia Nicol Salon & Day Spa, Cut Masters, Front Page Deli, Express Payday Advance and Woody's Wild Wings. Greenfield Square is a premiere shopping center, drawing customers from Oak Park, Huntington Woods, Berkley, Pleasant Ridge, Lathrup Village and Southfield. Ten Mile and Greenfield Roads are extremely high traffic arteries located in a major retail corridor.

- Approximately 1,233 Square Feet Available (15.5' x 80.0')
- \$22.00 Plus NNN Charges
- Traffic Counts: 29,031 ADT
- Population (3 Miles): 140,737
- Households (3 Miles): 56,551
- Located in the heart of the Oak Park retail corridor
- Immediate Availability



For Additional Information please contact:

**734.454.1855**

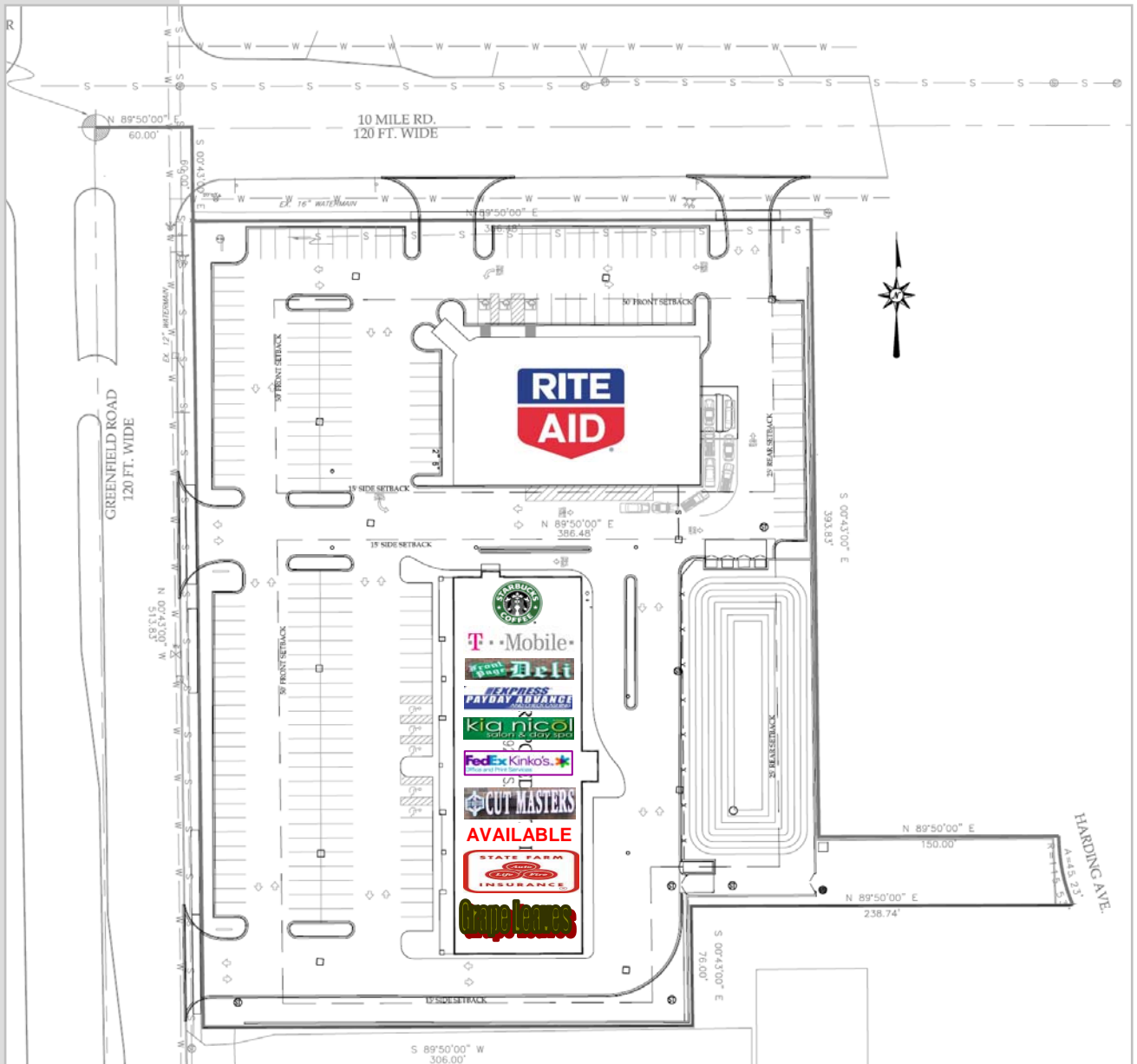


# National Tenant Mix-Join Rite Aid

Major Retail Corridor | High Traffic Counts



SEC 10 Mile and Greenfield Roads, Oak Park, Michigan 48237



For Additional Information, contact:

**734.454.1855**



**PARAMOUNT  
REAL  
ESTATE  
SERVICES**