

Excellent Retail Opportunity

Major Retail Corridor | High Traffic Counts

9350 Woodward Avenue, Detroit, Michigan 48202



Join These Tenants:

Great opportunity to lease in high traffic retail plaza located on Woodward Avenue in Detroit, Michigan. Rock Plaza is served by many nearby restaurants and services and offers Tenants easy access to Downtown Detroit as well as the northern suburbs via Woodward Avenue. Additionally, the property is strategically located in the heart of the Detroit retail corridor. Join Dollar General, City Check Cashing, Woodward Fish and Chips, and Subway.



- Approximately 1,242 Square Feet Available
- \$18.00 plus NNN Charges
- Population (3 Miles): 179,981
- Households (3 Miles): 67,449
- Mean Household Income (3 Miles): \$36,000
- Traffic Counts: 16,000 ADT
- Immediate Availability



For Additional Information please contact:

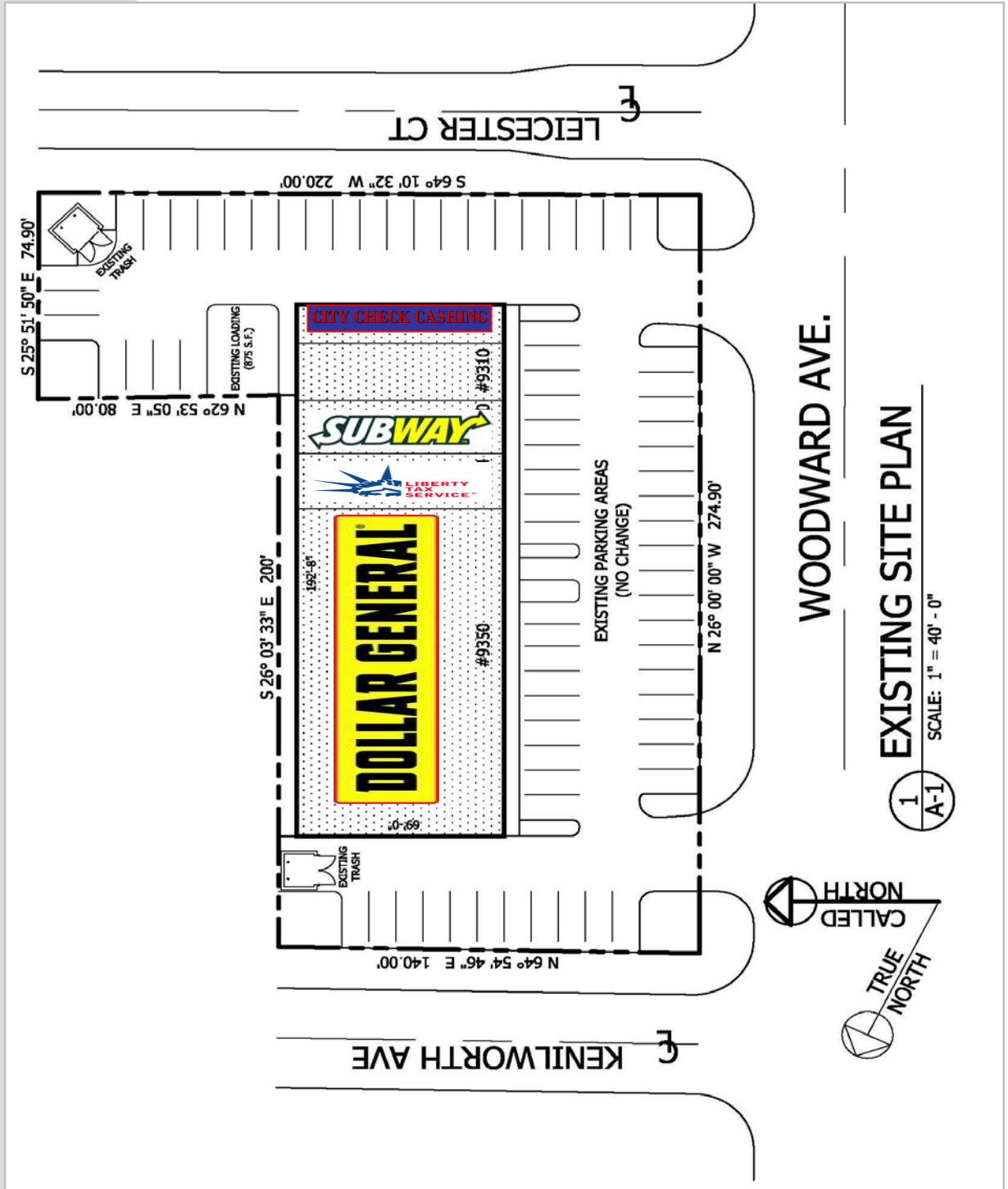
734.454.1855



Excellent Retail Opportunity

Major Retail Corridor | High Traffic Counts

9350 Woodward Avenue, Detroit, Michigan 48202



WOODWARD AVE.

EXISTING SITE PLAN

SCALE: 1" = 40' - 0"

1
A-1

